



ASSEMBLY

OAKLAND, CA





Vendors share common infrastructure to reduce the start-up costs and square footage required, lowering rent expense while providing shared traffic from neighboring market vendors.

Introducing Market at Assembly, a collection of seven artisan purveyors of food and beverage around a shared seating area.



Retail Leasing
Information:

Craig Semmelmeier (Lic. 01087433)
Craig@mspsinc.com
Direct: 925-444-3102

Ryan Semmelmeier (Lic. 01792779)
Ryan@mspsinc.com
Direct: 925-444-3111

MSPSINC.COM
888-322-MAIN

Developed by:

LOWE

Exclusively represented by:

MAIN STREET
PROPERTY SERVICES, INC.

The information contained in this document has been secured from sources we believe reliable, but we make no representations or warranties, expressed or implied, as to the accuracy of the information. References to square footage or age are approximate. We make no representations or warranties that the Premises are free of environmental hazards or that the Premises are suitable in all respects to your contemplated use. You should conduct an independent investigation of all pertinent property information. We bear no liability for any errors, inaccuracies or omissions.



Local ice cream, artisanal coffee, specialty bakery, handcrafted pizza, the East Bay's best sushi, fresh-tossed salads, and Market's taproom from local community focused vendors make Market at Assembly a one of a kind experience.

A discerning neighborhood and daytime population await your opening...

Retail Leasing
Information:

Craig Semmelmeier (Lic. 01087433)
Craig@mspsinc.com
Direct: 925-444-3102

Ryan Semmelmeier (Lic. 01792779)
Ryan@mspsinc.com
Direct: 925-444-3111

MSPSINC.COM
888-322-MAIN

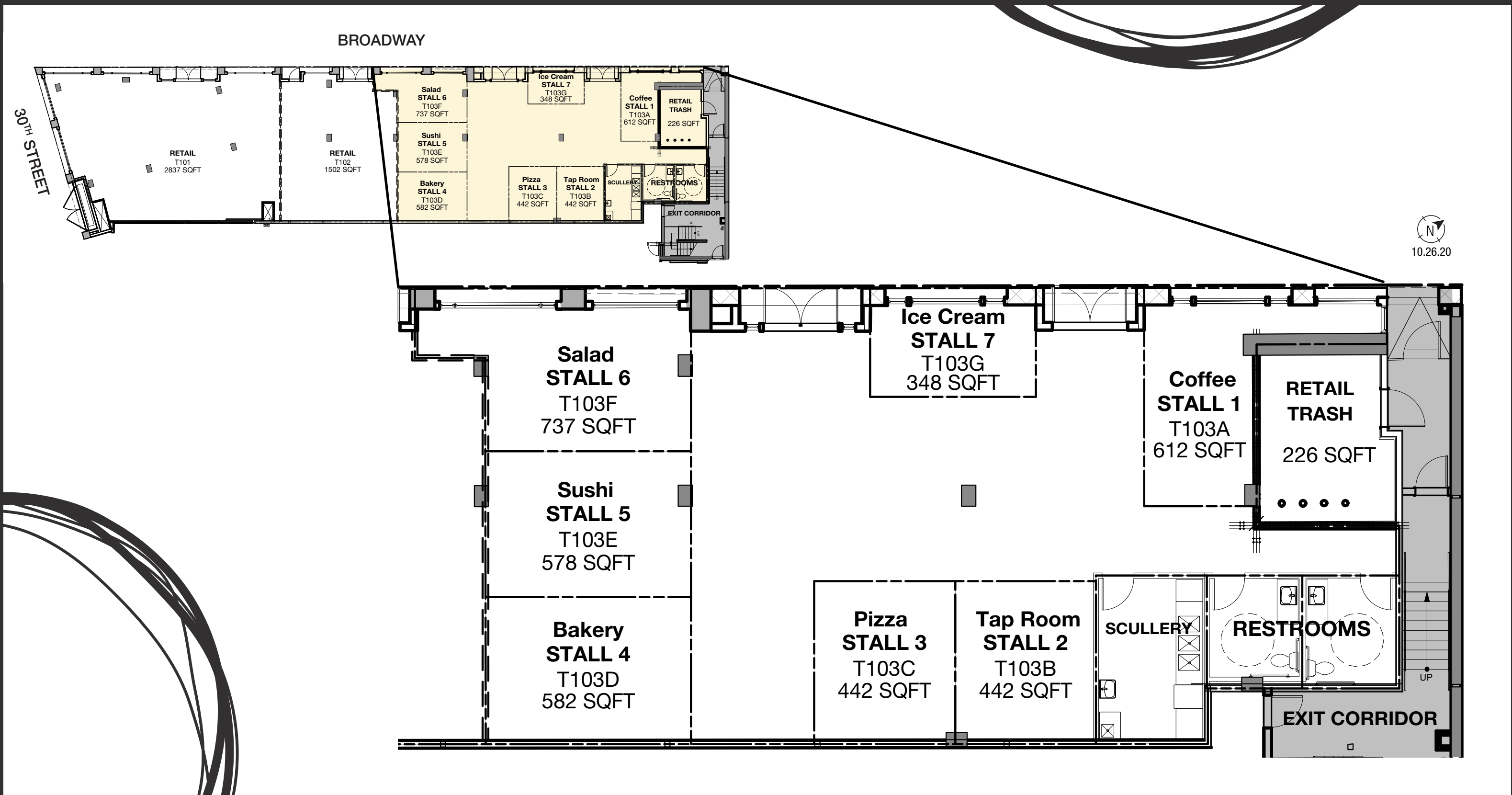
Developed by:

LOWE

Exclusively represented by:

MAIN STREET
PROPERTY SERVICES, INC.

The information contained in this document has been secured from sources we believe reliable, but we make no representations or warranties, expressed or implied, as to the accuracy of the information. References to square footage or age are approximate. We make no representations or warranties that the Premises are free of environmental hazards or that the Premises are suitable in all respects to your contemplated use. You should conduct an independent investigation of all pertinent property information. We bear no liability for any errors, inaccuracies or omissions.



Retail Leasing
Information:

Craig Semmelmeier (Lic. 01087433)
Craig@mspsinc.com
Direct: 925-444-3102

Ryan Semmelmeier (Lic. 01792779)
Ryan@mspsinc.com
Direct: 925-444-3111

MSPSINC.COM
888-322-MAIN

Developed by:

LOWE

Exclusively represented by:

MAIN STREET
PROPERTY SERVICES, INC.

The information contained in this document has been secured from sources we believe reliable, but we make no representations or warranties, expressed or implied, as to the accuracy of the information. References to square footage or age are approximate. We make no representations or warranties that the Premises are free of environmental hazards or that the Premises are suitable in all respects to your contemplated use. You should conduct an independent investigation of all pertinent property information. We bear no liability for any errors, inaccuracies or omissions.



Retail Leasing
Information:

Craig Semmelmeier (Lic. 01087433)
Craig@mspsinc.com
Direct: 925-444-3102

Ryan Semmelmeier (Lic. 01792779)
Ryan@mspsinc.com
Direct: 925-444-3111

MSPSINC.COM
888-322-MAIN

Developed by:

LOWE

Exclusively represented by:

